

# United Cerebral Palsy Of West Central Wisconsin, Inc.

United Cerebral Palsy of West Central Wisconsin  
206 Water Street  
Eau Claire, WI 54703-5699  
Phone: (715) 832-1782 Fax: (715) 832-8203  
Email: [ucpwcw@sbcglobal.net](mailto:ucpwcw@sbcglobal.net)  
[www.ucpwcw.org](http://www.ucpwcw.org)

**Serving the Counties of:**

Barron	Pepin
Buffalo	Pierce
Chippewa	Polk
Dunn	Rusk
Eau Claire	St. Croix
Jackson	Trempealeau



2009-2010  
Annual Report

United Cerebral Palsy is an agency sponsored by  
United Ways of the Chippewa Valley

## **THE TEAM: BOARD AND STAFF**

At United Cerebral Palsy of West Central Wisconsin, during the past year, the team effort of Board and Staff worked diligently to assure our consumer families sustained agency reliability.

### **2009-2010 Board of Directors**

Diane Spinucci, President  
Connie Werlein, Vice President  
Connie Jensen, Secretary/Treasurer  
Beth Hicks, Executive Committee  
Brian Rehlinger, Executive Committee  
Randi Johnson  
Linda Danielson  
Joe Stienessen  
Carol Carlson  
Judy Bentley  
Mark Seyer  
Jeff Erickson  
Ashley Parkhurst

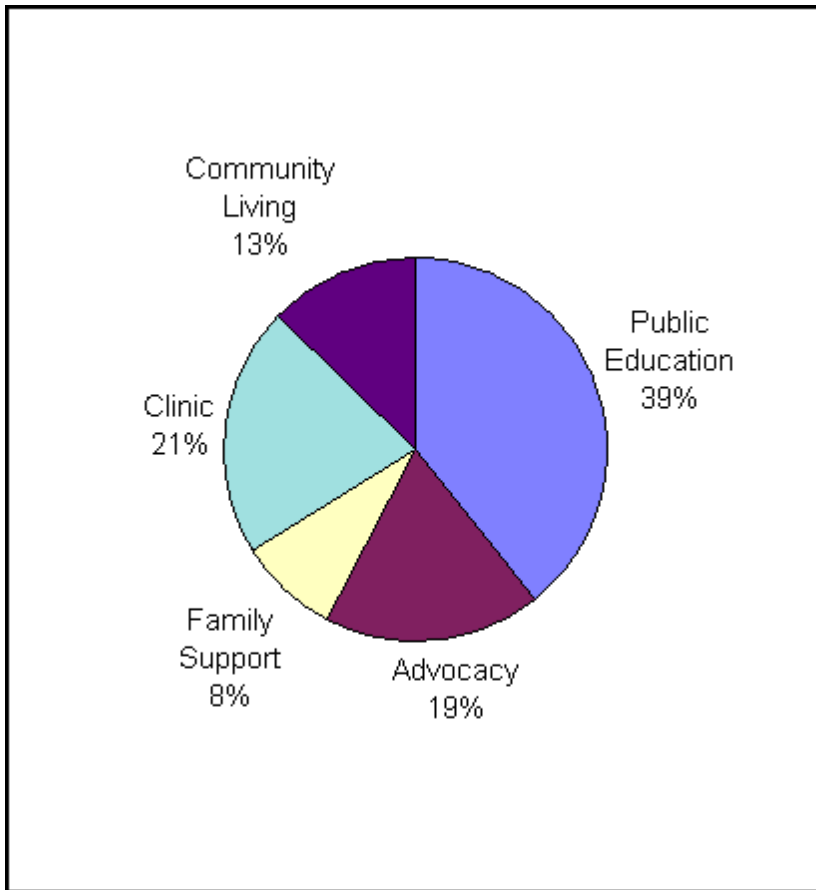
### **2009-2010 Agency Staff**

Ruth Gullerud, Executive Director  
Gene Amann, Development Director  
Cathy McCann, Adult Services Coordinator  
Traci Bauer, Community Service Coordinator  
Warren Petryk, Telethon Coordinator/Public Ed. Coordinator  
Barbara Thiel, Children Service Coordinator  
Larelyn Micheau, Respite Care Coordinator  
Carol Myhre, Fiscal Agent Payroll Clerk  
Elke Warner, Business Manager  
Debbie Anderson, Administrative Assistant  
Bob Erickson, Clerical Assistant  
Beth Samb, Development Assistant

# **UCP~WCW** **MISSION STATEMENT**

Our mission is advocating for independence, productivity and full citizenship of people with disabilities and supporting their full inclusion in all aspects of life and community.

## Program Time 2009-2010



## PROGRAM STAFF TIME

Area	Hours	%
Public Education	4,831	39%
Advocacy	2,285	19%
Family Support	1,039	8%
Clinic	2,613	21%
Community Living	1,581	13%
<b>Total</b>	<b>12,349</b>	<b>100%</b>

## Message from Board President

The following pages provide a summary of what has been accomplished by UCP of West Central Wisconsin staff and volunteers during the past year. It is evident that UCP continues to develop community connections and collaborative partnerships, recruit enthusiastic volunteers, and enlist the skills of dedicated staff members in working to provide full community membership for individuals with disabilities. By providing support services and financial assistance UCP supports the rights of individuals with disabilities to attain respect and dignity in their daily lives. For over 50 years UCP of West Central Wisconsin has strived to strengthen family and community ties and educate the community as to how it is enriched by diversity and the involvement of all individuals. As Board President, I am pleased to have the opportunity to summarize the year's accomplishments in supporting over 700 families in west central Wisconsin.



Diane Spinucci, Board President



Ruth Gullerud, Executive Director

Perspective from the Executive Director

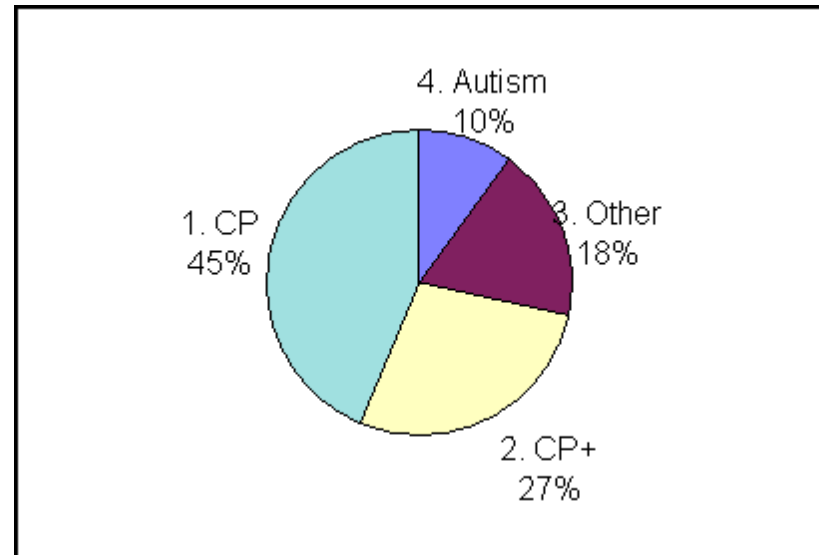
*“There is nothing like a dream to create the future.”  
Victor Hugo*

As we approach the closing of the first decade of the 21<sup>st</sup> century, I am observing some significant shifts in the way we are all providing supports to individuals in our communities. Changes in our visions of delivering services include the following:

- A shift from expanding system capacity to increasing service quality.

- A move from fixed and predetermined expectations of persons with severe disabilities to higher and more demanding expectations by the individuals themselves, their families, and service providers.

Cerebral Palsy today serves individuals having a diverse number of diagnoses, the fastest growing one being autism. Diversity is also shown in a wide range of ages served.



**Client Diagnosis**

	%	No.
Persons with Autism	10%	71
Persons with Other Disabilities	11%	79
Persons with CP and Other Diagnoses	45%	318
Persons with only Cerebral Palsy	33%	233
	100%	701

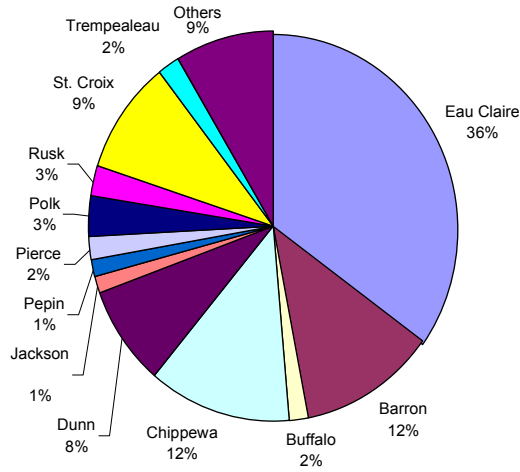
**Age Distribution**

	No.
Younger Than 6 Years	150
Between 6 and 21 Years	162

Over 21 Years	389
---------------	-----

Others	64	9%
<b>Total</b>	<b>701</b>	<b>100.0%</b>

## Clients by County



- A move from short-term, developmental planning to life-long functional planning.
- A move from providing a service continuum with emphasis on “special facilities and programs” to seeking a service array that includes generic resources to provide the assistance and support, as needed.

I can only express excitement about what improvements the next 30 years will present to infants now being born. Organizations such as United Cerebral Palsy must remain prepared to listen to the needs, keep up with the trends of support, and maintain our integrity in the eyes of consumers. It is a joy to have worked this past year with dedicated staff and visionary volunteers who have done just that, and of course, the wonderful consumer families who continue to inspire us to improve our role in their lives!

## COUNTIES SERVED

County	Count	Percentage
Eau Claire	251	36%
Barron	74	11%
Buffalo	14	2%
Chippewa	99	14%
Dunn	56	8%
Jackson	9	1%
Pepin	9	1%
Pierce	13	2%
Polk	24	3%
Rusk	18	3%
St Croix	58	8%
Trempealeau	12	2%

## **United Cerebral Palsy**

We are more than our name.

We meet the needs of individuals of all ages and all types of disabilities.

If a disability is:

- Apparent at **birth**,
- As a result of an **accident**, or
- As a consequence of **aging**

Then United Cerebral Palsy may be a help to you.

are making transitions. Several women, who are in various stages of their community inclusion, come together in the UCP Women's Support Group, self-named Butterflies United. During the summer months, teens coming from several counties gather to enjoy recreational activities.

#### PUBLIC AWARENESS

Awareness programs geared toward prevention and understanding of cerebral palsy and similar developmental disabilities are available to individuals and organizations to increase sensitivity of people to the challenges and needs of people with disabilities. Videotapes and books as well as speakers are available. A family of life-sized puppets also teaches children about realities of living with disabilities.

**Project BRIC (Building R Inclusive Community)**, represents a wonderfully networked group of youth and concerned adults who are designing activities toward the goal of improving opportunities for eventual employment success for youth in the Eau Claire area. This project has been funded through the help of the Otto Bremer Foundation and United Way of Greater Eau Claire.

#### EQUIPMENT RESOURCE AND ACQUISITION

A lending center is provided for families who want to borrow equipment. The resource lending inventory includes wheelchairs, walkers, and other therapeutic equipment, available for loan to prevent purchase of items temporarily needed. UCP also offers a limited amount of grants to families needing to purchase otherwise unfunded specialized equipment or accommodations.

#### COUNSELING AND SUPPORT GROUPS

Professional guidance is offered in individual, family, and group settings for families who are adjusting to a child having special needs, adults who are learning to live in the community, and adolescents who

#### RESPITE CARE SERVICES

UCP provides a variety of supports included under the general heading of Respite Care. **Respitality**, continues to provide primary care givers with a cost-free weekend with hotel rooms, meals and entertainment all donated through community businesses. Parents have time to relax away from home and renew their energies while their children are cared for by respite workers, friends or relatives.

Funds from RCAW as well as 2 area United Ways continued to provide families with **Lifespan Respite Care** funds, small grants to combine with existing respite resources designed to provide a continuum of consistent and quality respite care to caregivers.

The newest Respite Care support offered by UCP, initiated in 2006, is referred to as **Fiscal Agent** services. Through this system, United Cerebral Palsy is able to manage care funds on behalf of families while they are empowered to select, employ, train, and manage their own care providers.

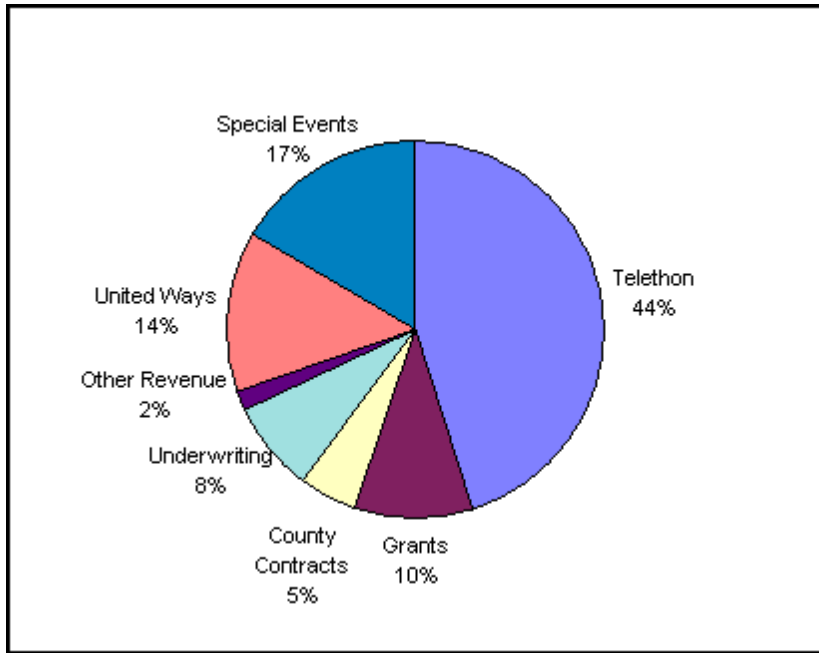
During the past 3 years, the services of Fiscal Agent have been extended to individuals pursuing Self-Directed Services under the Family Care program.

#### PARENT NURTURING

**Parent Nurturing**, supports caregivers, particularly of behaviorally challenged children having developmental delays, in learning and developing improved inter-relationship skills and behavioral growth.

TO ACCESS ANY OF THESE SUPPORTS, CALL UCP AT 715/832-1782.

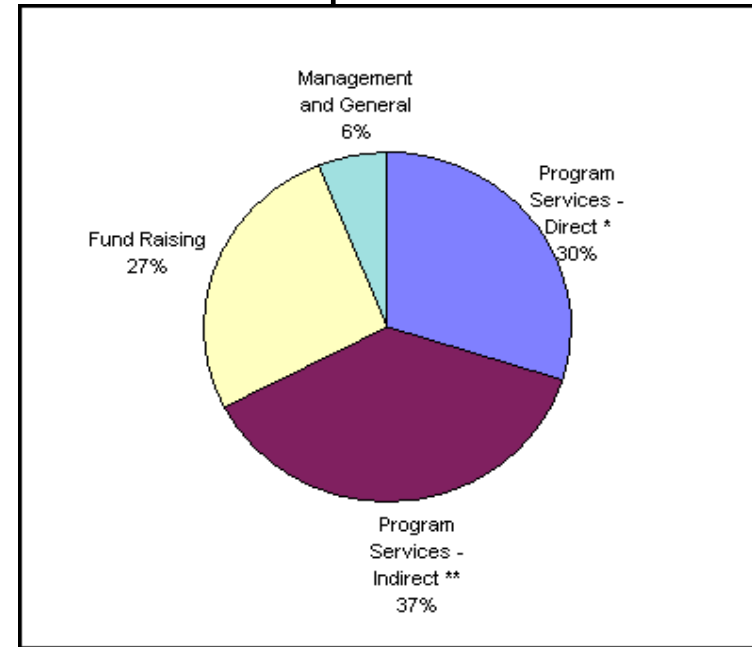
## Revenues 2009-2010



## REVENUES

Source	%	Amount
Telethon	36.6%	\$216,208
Special Events	9.7%	\$57,614
United Ways	15.0%	\$88,177
Fiscal Agent	8.5%	\$50,689
Underwriting	5.1%	\$30,380
Grants/County Contracts	19.1%	\$112,488
Contributions & Other	6.0%	\$36,035
<b>Total</b>	<b>100.0%</b>	<b>\$589,591</b>

## Resources Expended 2009-2010



## RESOURCES EXPENDED

Areas	%	Amount
Program Services - Direct *	33%	\$158,385
Program Services - Indirect **	38%	\$179,631
Fund Raising	23.0%	\$115,891
Management and General	6.0%	\$ 28,973
<b>Total</b>	<b>100.0%</b>	<b>\$589,591</b>

**\*Direct Services** are those which require face to face communication between staff and consumer. At UCP, these include Neurodevelopmental Evaluation Clinic, Counseling, Community Living Support, Respite, Advocacy, Respite Care Services, Financial and Equipment Assistance.

**\*\*Indirect** includes Advocacy, Public Education Activities, Information and Referral

## Services Provided by UCP



Please contact United Cerebral Palsy of West Central Wisconsin, Inc. for information, services, and support.

[www.ucpwcw.org](http://www.ucpwcw.org)

888-845-5775

715-832-1782

[ucpwcw@sbcglobal.net](mailto:ucpwcw@sbcglobal.net)

### COMMUNITY LIVING SUPPORT

Learning to live successfully in the community can be stressful for all adults, even more challenging for those also challenged by disabilities. Our Adult Services Coordinator helps the transition into the community easier by establishing networks with other organizations and developing resources available to support the person making the transition. The newest component within this area is referred to as a **Support Broker**, a staff person available to individuals having concerns with navigating through the new Self-Directed care (Family Care model).

### WEST CENTRAL WISCONSIN ADULT NEURODEVELOPMENTAL SPECIALTY CLINIC

The West Central Wisconsin Adult Neurodevelopmental Specialty Clinic provides everyday problem-solving & assistance with issues of aging for older individuals having developmental disabilities. Consumers see a team of experts including a psychiatrist, physical and occupational therapists, and consultants in communication, swallowing, nutrition, and psychology.

### INFORMATION & REFERRAL

Consumers are provided with technical assistance, information and appropriate referrals to other agencies. UCP monitors the implementation of those referrals. This service often provides families with the entrance into many other UCP services.

### ADVOCACY

Legal and human rights of persons with disabilities and their families receive special attention at UCP. Both individuals and groups of consumers participate in advocacy training, and agency staff advocate on a case-by-case basis as well as for whole groups.